

Ministry of National Education Education Decision Support System

New opening in "Decision Support Systems" - maximum use of spatial information-

In 2004, in the Ministry of National Education Spatial Decision Support System (SSDS) project, financed by Microsoft and with the integrator of Sentim, Başarsoft, as a subcontractor, has developed a web-based software with MapInfo technologies (MapXtreme 2004 .NET platform) to analyze schools, investments, number of teachers and students, and to determine investment needs according to the current and projected population.

Within the scope of the project, until the end of 2005, all primary and high schools in 81 city centers were placed in their real coordinates and delivered to the institution along with street, road, neighborhood and interesting social points maps of the provincial centers.

Although the designed system is completely compatible with the system used in the Ministry of National Education, it has not been implemented.

Desktop App

Based on the strategic decisions made in the national development plans, in order to effectively train the country's manpower;

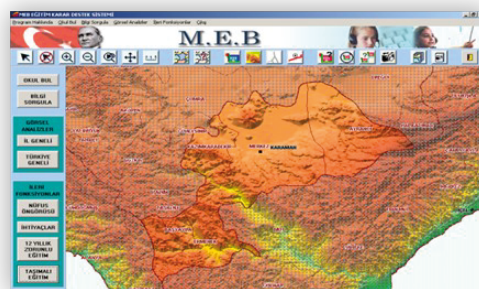
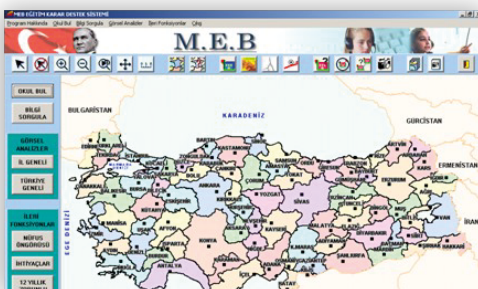
To direct the capacities of vocational and regular high schools,

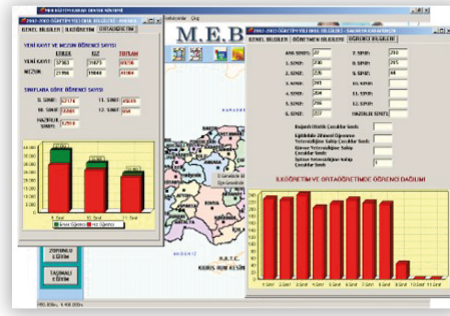
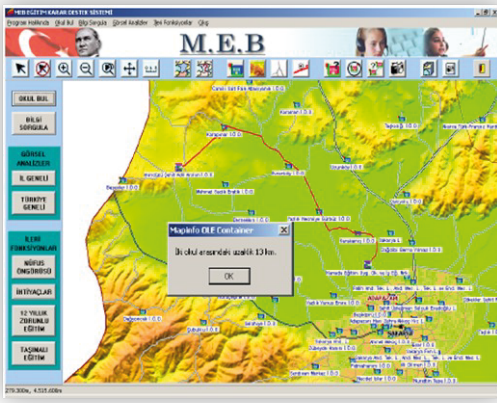
To train people in the way they can be employed by following the developments of the economic sectors,

Using school resources effectively

On the Basis of Turkey;

- Number of teachers, distribution of teachers according to them branches
- Number and distribution of students by gender, class, type of school
- School success percentages (ÖSYM, LGS)
- School inventory Information (number of classrooms, number of laboratories.)
- Population projections and capacity estimations can be made.





With the address information of the schools in the MEBBIS database

- Schools are placed in their geographical locations.
- Number of provinces completed: 81 provinces
- School Information and the information in the MEBBIS database are directly related.
- Thematic analyzes can be made on the basis of provinces and districts throughout Turkey, and on the basis of schools within the province.

The data used is fully compatible with the system used by the ministry (MEBBIS). In addition, analyzes were made using data that can guide large-scale decisions that are not available in the system. It has been assumed that these data will be integrated into the system later.

With this project;

- Appearing details that are not visible between the lines in the study reports that give statistical information in numbers,
- Easy to carry out zoning studies across the country with spatial analyzes,
- Making analyzes that are difficult and time-consuming to create on paper (short route, bussed education, etc.) easily and in a short time,
- It was ensured that the requested reports and maps were prepared up-to-date.

In the first phase of the project, the study enabled analyzes to be made on the basis of provinces and districts throughout Turkey. In the second phase of the project, the production of a city center map in street detail on the basis of 81 provinces (neighborhood, district, road-middle, equipment, etc.) and the Geocoding of the schools in the MoNE inventory are carried out. As a result of this study, all provinces were completed at the beginning of 2006. In this way, the ministry will be able to analyze the school needs in street detail in the future. The project was carried out jointly with Sentim.