

# 11 MapInfo

Kullanıcı Konferansı

Ten reasons to use the  
64 bit MapInfo Pro™!!!

## The List

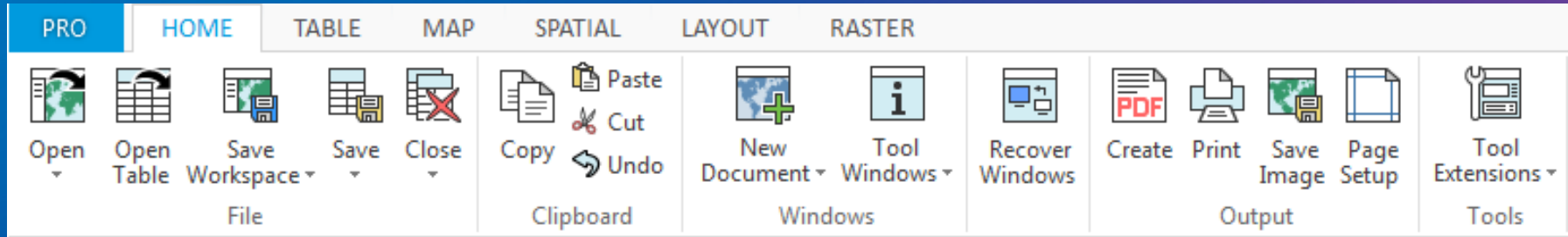


1. Easier to learn, easier to use.
  2. Geocoding for all! Access to the Pitney Bowes Global Geocoder
  3. Interactive thematic mapping
  4. Improved performance
  5. Break down barriers with the Extended TAB file
  6. Make MapInfo Pro™ work for you. Customize it!
  7. More data format support
  8. Faster Raster
  9. New Layout Designer
  10. Backwards compatibility of data, workspaces and applications
- And... for developers: Improvements to MapBasic

Resources to help you make the transition

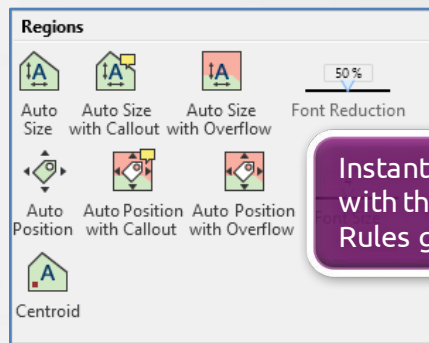
---

1) New ribbon based user interface is easier to learn and easier to use.



# Easier to learn, easier to use...

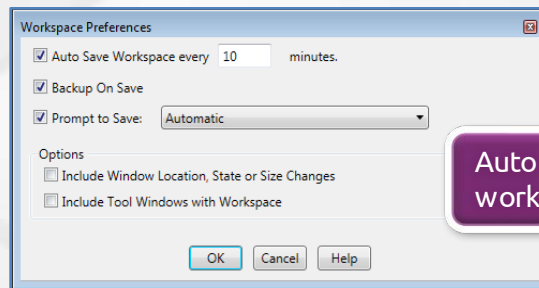
- Support for multiple monitors.
- Auto save and Auto backup for workspaces.
- Instant feedback (mouse over or preview click)
- New Tool Manager makes it easier to find and use MapBasic add-ons.
- Searchable and configurable Workspace Explorer.
- Mini-toolbar provides quick access to commonly used capabilities.
- Backstage area (PRO tab) provides easy access to preferences, updates, license info and more.
- Better Window control: Hide, clone, rename any window.
- Benefit from what you already know! The user interface has much in common with popular Windows applications..



Instant feedback with the Label Rules gallery



Mini-toolbar



Auto Save workspaces

## 2) Geocoding for all!

Get your data on the map with the Pitney Bowes Global Geocoder

The bottom of the slide features a decorative graphic consisting of several parallel, wavy lines that flow from left to right. The lines are rendered in a gradient of colors, transitioning from a light blue on the left to a vibrant magenta on the right. The overall effect is a sense of movement and modern design.



# Geocoding for all!

Starting in MapInfo Pro v16.0 every MapInfo Pro user can access the Pitney Bowes online Global Geocoder.

Requires signing up for an account.

1000 credits per month (per user)

- City/postal level geocode = 1 credit per geocode
- Street level (or better) = 5 credits per geocode

Premium Services customers receive 2000 credits per month (per user)

Upgrade plans available for those who require additional geocoding.

Easy to sign up and you get a monthly allocation of credits for as long as MapInfo Pro is maintained.



Geocoding Account Sign Up

First Name

Last Name

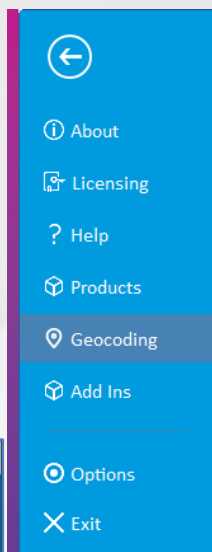
Company

Email Address

Confirm Email

[Click here to login with your existing account information.](#)

Sign Up Cancel

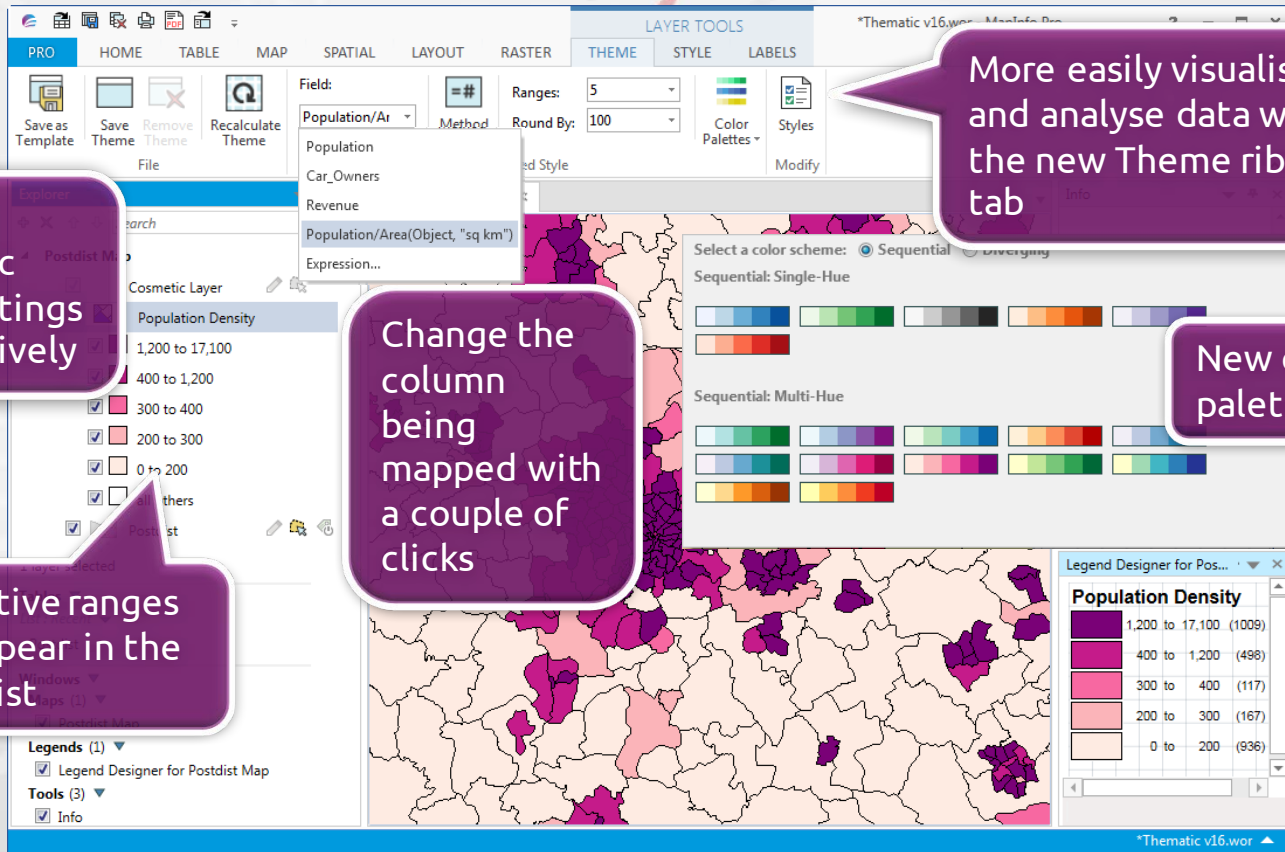


## 3) Interactive Thematic Mapping

See it faster, solve it sooner!

The bottom of the slide features a decorative graphic consisting of multiple parallel, wavy lines that flow from left to right. The lines are colored in a gradient, transitioning from a light blue on the left to a vibrant magenta on the right. The overall background of the slide is a smooth gradient from a deep blue at the top to a lighter blue at the bottom.

# New Interactive Thematic Mapping



Change thematic map settings interactively

More easily visualise and analyse data with the new Theme ribbon tab

Change the column being mapped with a couple of clicks

New color palettes

Interactive ranges now appear in the layers list



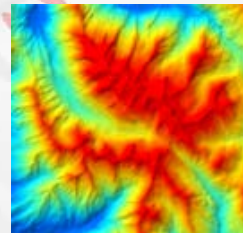
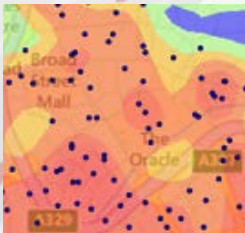
## 4) Performance Improvements

Get more done in less time!

The bottom of the slide features a decorative graphic consisting of several parallel, wavy lines that flow from left to right. The lines are colored in a gradient, transitioning from a light blue on the left to a vibrant magenta on the right. The overall background of the slide is a smooth gradient from a deep blue at the top to a lighter blue at the bottom.

# Performance Improvements

- Improved performance on SQL Select filtering.
- Improved performance on Map querying.
- Improved rendering of large point file tables.
- Use of more memory in the 64 bit MapInfo Pro improves performance on a variety of tasks.
- Improved display performance for raster data
  - Multi-resolution raster format performs well at any data size.
  - “Pyramiding” technique applied to other raster formats for fast display at any zoom level.
- Faster raster processing and analysis capabilities (MapInfo Pro Advanced)



## 5) Breaking down barriers with the new Extended TAB file format

Have large data files? Is that 2 GB file size limit getting in your way?

The bottom of the slide features a decorative graphic consisting of several parallel, wavy lines that flow from the left towards the right. The lines are rendered in a gradient of colors, transitioning from a light blue on the left to a vibrant magenta on the right. The overall effect is a sense of movement and modern design.

# New Extended TAB file format

- Support for files larger than 2 GB in size
- Support for up to 1000 columns in a table
- Unicode (UTF-8 or UTF-16) character set support
- Increased number of indexes





## 6) Make MapInfo Pro work for you: Customize it!

No programming required!

The bottom of the slide features a decorative graphic consisting of several parallel, wavy lines that flow from left to right. The lines are colored in a gradient, transitioning from a light blue on the left to a vibrant magenta on the right. The background of the slide is a smooth gradient from dark blue at the top to a lighter blue at the bottom.



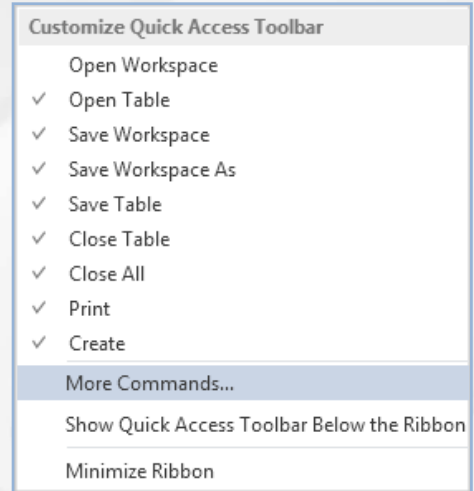
# Customize the interface to suit your needs

- Customizable Quick Access Toolbar
- Customizable Ribbon (add your own Ribbon Tabs and/or Groups)
- Create your own keyboard shortcuts. Assign any command to any key combination.
- Preferences to configure the Workspace Explorer, window behaviour and lots more.
- New Tool Manager – easier to manage your tools and add-ins.

*Easy configuration,  
no programming.*




The Quick Access  
Toolbar



## 7) Support for more data formats

Get access to the data you need!  
Share data more easily!

The bottom of the slide features a decorative graphic consisting of several parallel, wavy lines that flow from left to right. The lines are colored in a gradient, transitioning from a light blue on the left to a vibrant magenta on the right. The overall background of the slide is a smooth gradient from a deep blue at the top to a lighter blue at the bottom.

# Data format support

Get access to the data you need...

- OGC GeoPackage format – store multiple sets of data in a single file.
- OGC Web Feature Service (WFS) version 2.0 support.
- OGC Web Map Tile Service (WMTS) support.

## WMTS Examples



USGS Topo Imagery Map



Geoscience Australia:  
Proximity to power lines



PDOK Netherlands  
background map

## 8) Faster Raster!

Great display and visualisation with raster data of virtually any size!  
Take your analysis to the next level with MapInfo Pro Advanced

The bottom of the slide features a decorative graphic consisting of several parallel, wavy lines that flow from left to right. The lines are colored in a gradient, transitioning from a light blue on the left to a vibrant magenta on the right. The background of the entire slide is a smooth gradient from a deep blue at the top to a lighter blue at the bottom.

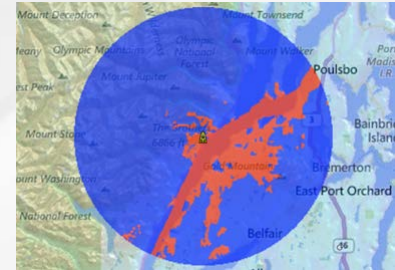
# Faster Raster!

All MapInfo Pro users working with the 64 bit version get access to the super fast visualisation and display capabilities of our next generation raster engine.



## Turn up the speed of your GIS with MapInfo Pro Advanced

- An optional add-on for MapInfo Pro
- Work with huge raster datasets (terabytes)
- Visualise and analyse the data using a host of raster grid techniques.



An example: 5 meter resolution Digital Elevation Model (DEM) of Australia derived from 236 individual LiDAR surveys (245,000 square kilometres, 3.3 Terabytes of data). <http://www.ga.gov.au/elvis/>

Using MapInfo Pro Advanced the data was merged into a single multi-resolution raster (MRR) file of 36 GB in size (98% compression). This file opens instantly and can be panned and zoomed (and more) in real time.



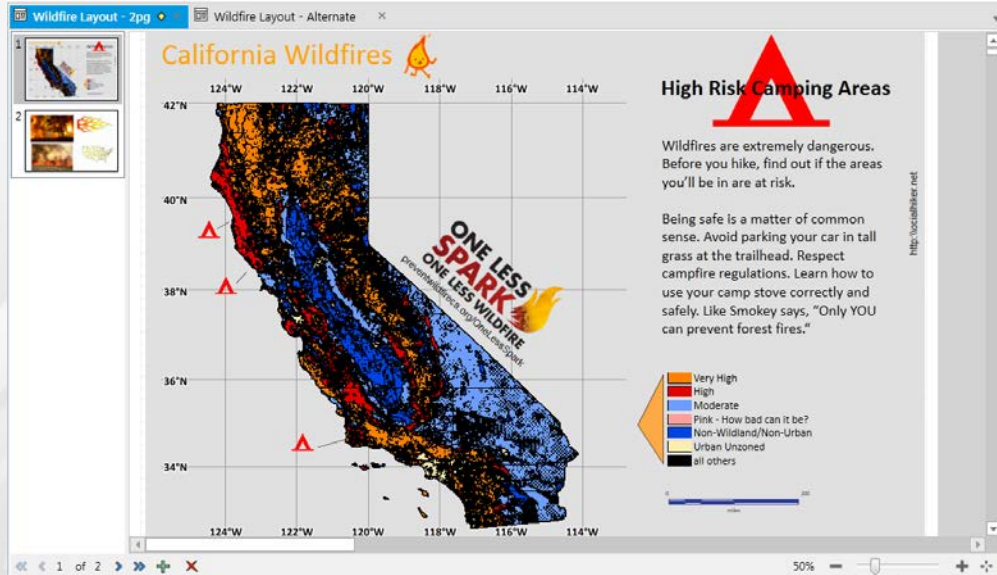
## 9) New Layout Designer

Prepare your maps for output more quickly and easily

The bottom of the slide features a decorative graphic consisting of several parallel, wavy lines that flow from left to right. The lines are colored in a gradient, transitioning from a light blue on the left to a vibrant magenta on the right. The overall background of the slide is a smooth gradient from a deep blue at the top to a lighter blue at the bottom.

# New Layout Designer

- No more switching back and forth between your Map and Layout – work directly on Layout canvas.
- New graticule (dynamic or static).
- Grids and guidelines for easy alignment.
- Better support for using images.
- Layout is WYSIWYG.
- Scale bars directly on Layout page.



# 10) Backwards compatibility

Bring your existing maps and data into the 64 bit version

The bottom of the slide features a decorative graphic consisting of several parallel, wavy lines that flow from left to right. The lines are colored in a gradient, transitioning from a light blue on the left to a vibrant magenta on the right. The background of the entire slide is a smooth gradient from a deep blue at the top to a dark purple at the bottom.

# Backwards compatibility of data, Workspaces and MapBasic applications

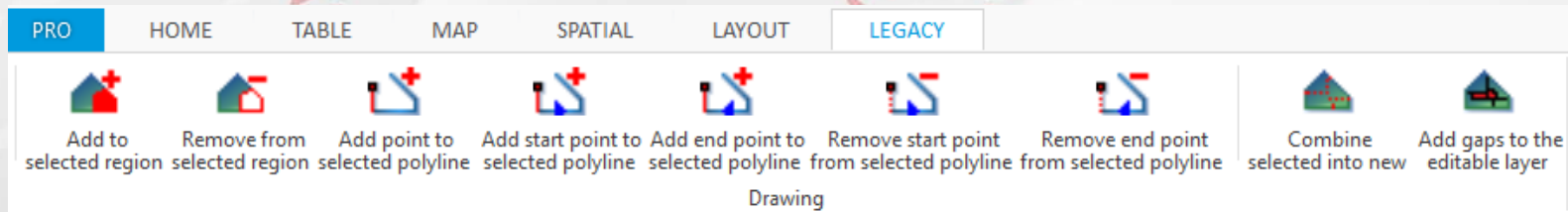
Data tables created in older versions of MapInfo Pro can be opened in the 64 bit version.

MapInfo TAB files created in the 64 bit version can be opened in earlier versions.

- An exception are tables in the new Extended TAB file format.

Workspaces created in the 32 bit versions of MapInfo Pro will open in the 64 bit version.

MapBasic applications are compatible, with some exceptions on deprecated functionality and external code.



# For Developers: Improvements to MapBasic

Create better applications for your users than ever before!

A decorative graphic at the bottom of the slide consisting of several parallel, wavy lines that flow from left to right. The lines are colored in a gradient from light blue on the left to magenta on the right.

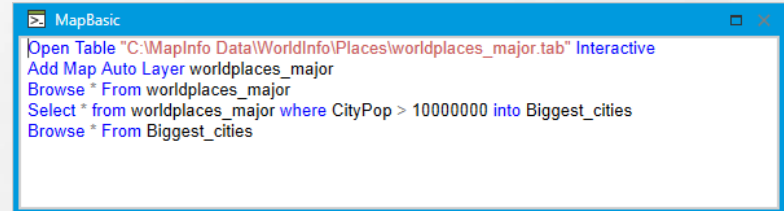


# MapBasic window – easier to learn and use

MapBasic window syntax highlighting and preferences.

## MapBasic language improvements

- MapBasic .NET support enhanced
  - Construct objects
  - Call Instance and Interface Methods and Properties
- New variable types: This, RefPtr, IntPtr and LargeInt,
- New interface is encompassed in a Microsoft .NET object model.
  - Support for .NET Instance object and Interface Properties and Methods
  - NET object model can be used from compiled MapBasic
- Improved method for integrating maps in other applications.



```
MapBasic
Open Table "C:\MapInfo Data\WorldInfo\Places\worldplaces_major.tab" Interactive
Add Map Auto Layer worldplaces_major
Browse * From worldplaces_major
Select * from worldplaces_major where CityPop > 10000000 into Biggest_cities
Browse * From Biggest_cities
```

# Resources to help you make the transition

There is plenty of help for you out there!

The bottom of the slide features a decorative graphic consisting of several parallel, wavy lines that flow from left to right. The lines are rendered in a gradient of colors, transitioning from a light blue on the left to a vibrant magenta on the right. The overall effect is a sense of movement and modern design.



Topic	Article or resource
1. Easier to learn, easier to use.	<a href="#">10 tips for using the ribbon interface.</a>
2. Geocoding for all	<a href="#">Learn more</a> on our Web site
3. Interactive thematic mapping	<a href="#">Article</a> from “The MapInfo Pro” journal
4. Improved performance	} <a href="#">Article</a> on working with large files, Unicode and performance improvements.
5. New Extended TAB file format.	
6. Customize MapInfo Pro	<ol style="list-style-type: none"> <li>1. <a href="#">Customize the Ribbon</a> article</li> <li>2. <a href="#">Keyboard shortcuts</a> article</li> </ol>
7. More data format support	<a href="#">Article</a> on WMTS from “The MapInfo Pro” journal
8. Faster Raster	<a href="#">MapInfo Pro Advanced articles</a>
9. The Layout Designer	<a href="#">Article</a> from “The MapInfo Pro” journal
10. Backwards compatibility	<a href="#">Article on MapBasic applications</a>
MapBasic improvements	<a href="#">“The Developer Dojo”</a> series of articles
Resources to help	There’s more here: <a href="#">“Everything 64 bit”</a>

Want to know more?

Don't have MapInfo Pro™ v16.0 yet?

Download it from our Web site here:

<http://www.pitneybowes.com/us/mipro-free-trial.html>

For more tips, tricks, techniques and advice, why not sign up for "The MapInfo Pro" monthly journal?

The MapInfo Pro™ Monthly Journal





**Tom Probert**  
**MapInfo Pro Global Product Manager**  
**Tom.probert@pb.com**