

# Pitney Bowes Software Yer Bilimleri

Chris Jenkins  
Business Development Natural Resources EMEA  
Pitney Bowes Software





ARAMA



GELİŞTİRME



İNŞA ETME



ÜRETİM



DAĞITIM



REHABİLİTASYON



Arama

Geliştirme

İşleyiş

Sonuçlandırma

Başlangıç	Detaylı	Değerlendirme	Maden Planlama	İnşa Etme		
Jeobilimsel verinin ön incelemesi	Detaylı örnekleme	Detaylı sondaj	Fizibilite Çalışmaları	Madenin yeri	Kurumsal Sosyal Sorumluluk	Kurumsal Sosyal Sorumluluk
Gökyüzünden tarama	Jeokimyasal	Detaylı analiz ve değerlendirme		Altyapı		
Prospeksiyon	Jeofiziksel	Ön-fizibilite çalışmaları				
Sahanın Haklarını Satın Alma	Zemin Tarama		Maden Sahasının Sonlandırılması ve Arazi İslah planlaması	Madenin dizaynı ve inşaatı	Madeni Genişletmek	Yeniden düzenleme
Örnekleme	Haritalama	Çevresel Değerlendirme	Maden ve Tesis Dizaynı	Altyapının dizaynı ve inşaatı		
	Sondaj					
	Çevresel taban seviyesi işi					



pbEncom




Autodesk

# Kurumsal Sosyal Sorumluluk

 ABC Resources Ltd

Sustainability Matters  
...excellence in CSR

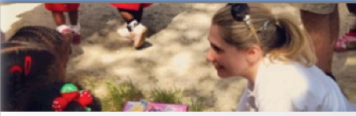
Social Environment Economic



Sustainable development is our number 1 priority and core value. We are committed to health, safety, the environment and the communities in which we operate. We work closely with and respect all our stakeholders.

We have a proven track record within the communities in which we work, backed by award-winning Corporate Social Responsibility standards.


Social



We are committed to community engagement and investment in the places where we live and work. We develop open, honest and respectful relationships and partnerships with the communities in which we explore, construct and operate

[> Learn More](#)


Environment



Our company has an important responsibility for the natural environment within which it operates. Environmental considerations are factored into all aspects of planning and operations.

[> Learn More](#)

Economic



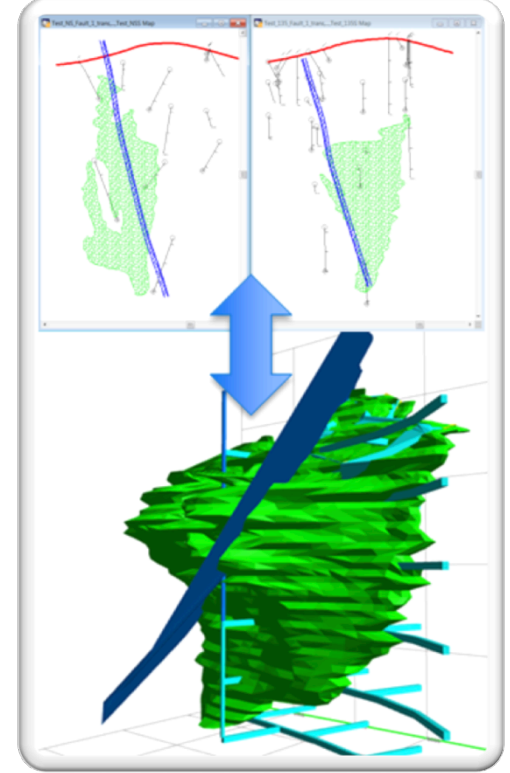
Investment in exploration is an integral part of our growth strategy. Our exploration activities are continuously assessed and result driven, with the principle aim being to maintain a robust pipeline of projects to then define and deliver an economically mineable ore body.

[> Learn More](#)

# pbEncom Çalıştayı

Çalıştay 04.10.2012 saat 14.25'de

- pbEncom dan kısaca yenilikler
- Discover plus 3D'deki yenilikler, ipuçları ve püf Noktaları
- Discover Yol Haritası & Müşteri Geri bildirim seansı ve Discover & D3D gelişmeleri
- Geophysics Yol Harita'sındaki yenilikler
- Madencilikte Kurumsal Sosyal sorumluluk için Web Haritalama, Genel Bakış ve Sorular
- Sorularınız...



# pbEncom Sosyal Ağları



- Konumsal Zeka
- MapInfo
- MapInfo & Discover – Haritalama Teknikleri
- MapInfo-L
- Pb Encom Yazılımı
- Pitney Bowes MapInfo
- Pitney Bowes Network
- Yerbilimlerinde CBS

## The MapInfo Professional

İpuçları ve Püf Noktaları

Video Eğitimleri

Aylık Anket

MIP Sürüm Bilgisi

Gelişmiş İpuçları

Yaklaşan Sanal Seminerler

Yaklaşan olaylar

Kötü Coğrafya Esprisi...



# Global Webinar Series 2012

Üye olmak için lütfen öğleden sonraki *pbEncom* çalıştayına katılın!!

## Encom Discover Winter Series Webinars

PbEncom invites you to the **Professional Map Making Webinar on the 9th October 09:00 GMT.**

This interactive presentation will cover the following:

- Data Importing
- Effective Digitising
- Data Entry Attribution
- Data Validation
- Data Compilation
- Map Publishing

We look forward to welcoming you to this event.

After registering you will receive a confirmation email containing information about joining the webinar.

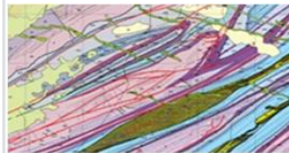
### System requirements

PC-based attendees  
Required: Windows® 7, Vista, XP or 2003 Server

Macintosh®-based attendees  
Required: Mac OS® X 10.5 or newer

Over **35,000** users of our  
desktop geoscience software...  
and growing

*pbEncom*™



Reserve your seat now:

Professional Map Making  
with MapInfo Pro &  
Discover

Register



*pbEncom*™

2012 Webinar Series

PBENCOM

PITNEY BOWES SOFTWARE

CONTACT US

MAXIMISE  
YOUR RESOURCE  
POTENTIAL



with MapInfo Professional and Encom Discover | 2012 Webinar Series

## pbEncom's 2012 Educational Webinar Series

With tightening exploration budgets, maximising the value of your in-ground exploration dollars is becoming even more critical.

This series of short webinars looks at how to effectively leverage GIS to unlock the full potential of your exploration programs, from strategic regional targeting through to prospect-scale drilling.



### Professional Map Production

Whatever your geospatial exploration problem, generating professional, legible and repeatable maps unlocks the door to informed decision making and reporting. Whether conveying ideas and proposals internally, or assisting in external stakeholder communications, powerful and informative visuals are vital to your business.

Register here for this 30 minute webinar - 11 or 17 October 2012



### Informed and Effective Prospectivity Mapping and Regional Targeting

Ensure your greenfields targeting and prospectivity analysis is based on the best information available. Accurately and efficiently integrate and leverage all your disparate datasets in order to make fully-informed decisions and effectively prioritise your targets.

Register Here for this 30 minute webinar - 31 October 2012



### Maximise the Success of Your Surface Sampling Programs

From streamlined planning and more efficient field work programs, through to powerful analytical options for trend and anomaly identification, we'll show you how to maximise the return on your surface exploration expenditure.

Register Here for this 30 minute webinar - 21 November 2012



### Drilling Can Be the Most Expensive Stage of Exploration; Are You Getting the Full Value Out of This Significant Investment?

Discover's leading-edge Drillhole and 3D capabilities offer the best value for money in the market, from fast and effortless ultra-detailed cross-section creation and management, through to extensive 3D modelling and analytical options.

Register Here for this 30 minute webinar - 5 December 2012

# EMEA Winter Series Webinars 2012 / 2013

## 2012/2013 Schedule - Themes

- 9 Ekim – Profesyonel Haritalama
- 11 Ekim - Profesyonel Haritalama
- 31 Ekim – Efektif ve bilgilendirilmiş Prospektif Haritalama ve Bölgesel Hedefleme
- 13 Kasım – Veri Çizimi
- 21 Kasım – Yüzeysel örnekleme başarısını artırın
- 5 Aralık – Sondaj arama faaliyetinin en masraflı kısmı olabiliyor; Siz bu önemli yatırımı tam verimle kullanabiliyor musunuz?
- 11 Aralık – Veri Analizi
- 8 Ocak – En Kesitleme
- 12 Şubat – 3B Sunum
- 12 Mart – 3B Modelleme

**Pitney Bowes**  
Software

Every connection is a new opportunity™

**pbEncom**

**Encom Discover Winter Series Webinars**

PbEncom invites you to the **Professional Map Making Webinar on the 9th October 09:00 GMT.**

This interactive presentation will cover the following:

- Data Importing
- Effective Digitising
- Data Entry Attribution
- Data Validation
- Data Compilation
- Map Publishing

We look forward to welcoming you to this event.

After registering you will receive a confirmation email containing information about joining the webinar.

**System requirements**

PC-based attendees  
Required: Windows® 7, Vista, XP or 2003 Server


Macintosh®-based attendees  
Required: Mac OS® X 10.5 or newer

**Reserve your seat now:**

Professional Map Making with MapInfo Pro & Discover

[Register](#)

Over 35,000 users of our desktop geoscience software... and growing



▸ Teşekkürler

▸ [chris.jenkins@pb.com](mailto:chris.jenkins@pb.com)